



**THE SIMPLIFIED SOLUTION
FOR COMPLEX NEEDS**

omnibrake® TSE-REX

TSE OMNIBRAKE REX - RAPID EXCHANGE RODS

THE OMNIBRAKE REX CHARACTERISTICS

Optimized Design

OmniBrake REX features Variable Clocking Technology (VCT), reducing installation time by up to 75% while minimizing errors, making it a reliable choice for high-volume production environments.

Proven Durability

Built with all-steel housings and advanced coatings, OmniBrake REX is designed to withstand harsh conditions, ensuring long service life.

Patented Design

With U.S. Patents No. 9,050,958 and 10,913,439, the innovative design eliminates common failure points, offering superior reliability compared to conventional brake chambers.

Inventory Optimization

The 180° clock rotation and universal fit design reduce the need for separate left- and right-hand units, covering most applications with just two part numbers.

KEY BENEFITS FOR OEM SUPPLIERS

Proven Quality and Reliability

Each unit undergoes rigorous in-house testing, including pressure cycling, vibration, and salt spray testing, ensuring it meets stringent OEM quality standards.

Streamlined Assembly

Factory-sealed diaphragms eliminate the need for clamped air connections, speeding up installation and ensuring consistency on production lines.

Customizable Configurations

OmniBrake REX offers flexible stroke lengths and clevis options to accommodate a wide range of vehicle designs, making it adaptable to various OEM applications.

Cost-Effective Inventory

A simplified part number lineup reduces inventory requirements, saving storage space and lowering supply chain complexity.

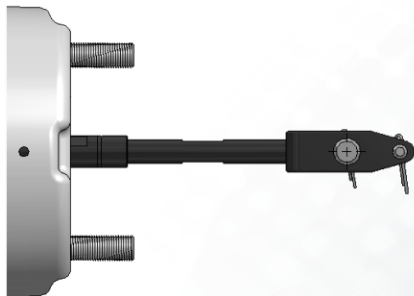
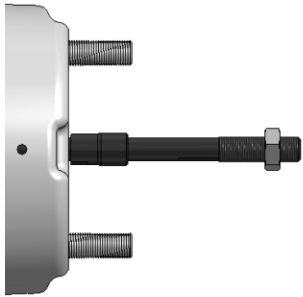
TSE OMNIBRAKE REX - RAPID EXCHANGE RODS

IT'S TIME TO TAKE A BIG BITE OUT OF INVENTORY COSTS



TSE Omnibrake REX Part Numbers

3030TVR2 :3030 2.5" Stroke | 3030TVR3 :3030 3" Stroke



Single Kit Models	Box Color Code	Description	Typical Applications	Works with the following Auto-Slack brands & models*
Push rod kits - Threaded includes jam nut installed				
K575	Gold	5.75" B dimension threaded Rod	Standard 5" trailer axle	All
K631	Silver	6.31" B dimension threaded Rod	SAF axle	
K706	Purple	7.06" B dimension threaded Rod	Meritor large diameter axle	
K975	Green	9.75" B dimension threaded Rod	Intraax/Vantraax	
K150	None	15.0" B dimension threaded Rod	Universal fully threaded	

Single Kit Models	Box Color Code	Description	Typical Applications	Works with the following Auto-Slack brands & models*
Push rod kits - Fixed Clevis includes stainless steel pins and cotters installed				
K225-130	None	2.25" A dimension Fixed Clevis with 1.3" pin spacing	Truck welded clevis	1, 3, 4, 6, 8
K680-102	Orange	6.80" A dimension Fixed Clevis with 1.02" pin spacing	Standard 5" Axle Gunite Slack	1, 2
K680-130	Yellow	6.80" A dimension Fixed Clevis with 1.3" pin spacing	Standard 5" Axle	1, 3, 4, 6, 8
K680-138	White	6.80" A dimension Fixed Clevis with 1.38" pin spacing	Standard 5" trailer axle Meritor, Stemco slack	1, 5, 7
K110-130	Brown	11.0" A dimension Fixed Clevis with 1.3" pin spacing	Intraax/Vantraax	1, 3, 4, 6, 8
K110-138	Blue	11.0" A dimension Fixed Clevis with 1.38" pin spacing	Intraax/Vantraax Meritor, Stemco slack	1, 5, 7

***Auto-Slack Notes:**

1. TSE/Webb/MEI/Haldex (0.5" pin)
2. Gunite 1000 series 1.02" pin spacing
3. Gunite 2000 series 1.3" pin spacing
4. Meritor 1.3" pin spacing (Truck)
5. Meritor 1.38" pin spacing (Trailer)
6. Stemco 1.3" pin spacing
7. Stemco 1.38" pin spacing
8. Bendix Versajust

OEM names are used for reference purposes only.



2310 Industrial Drive S.W.
Cullman, Alabama 35055

WWW.TSEBRAKES.COM
256 736-6275

©2025 TSE Brakes, Inc.